

This way to the wedding...

We've put together some driving directions which should help you navigate your way to Newport, to the church and to the reception. If you need other specific directions, we'll be happy to put them together for you. Just get in touch with us and let us know what you need.

Best,
Chris & Nina
cerbo@cloud9.net, nina@cloud9.net, 310.301.3955
On the web: www.ninaandchriswedding.com

DIRECTIONS TO NEWPORT, RHODE ISLAND

From Providence / T.F. Green Airport to downtown Newport

- Exit Airport and head to Interstate 95 South.
- Follow Interstate 95 South to Route 4 South (exit #9) to Route 138 East.
- Go over the Jamestown Bridge (no toll) and then over the Newport Bridge (\$2.00 toll).
- Take the first exit off of the Newport Bridge toward Scenic Newport.
- Turn right off the exit ramp and drive straight through the first set of traffic lights.
- At the second set of lights, turn right (America's Cup Avenue) and you will arrive in downtown Newport.

From Boston / Logan Airport to downtown Newport

- Follow directions from your rental car location to airport exit. You may want to get directions to 95 South.
- If you don't have directions, we expect you will need to take Interstate 90 West toward Williams Tunnel.
- Take exit #23 onto Interstate 93 South.
- Take exit #1 onto Interstate 95 South toward Providence, Rhode Island, then follow directions above.

From points South to downtown Newport

- Take Interstate 95 North to Exit 3A (Route 138 East).
- Follow Route 138 East past the University of Rhode Island and up to Route 1 North / Tower Hill Road.
- Take Route 1 North to continuation of Route 138 East (Bridges / Jamestown / Newport exit).
- Go over the Jamestown Bridge (no toll) and then over the Newport Bridge (\$2.00 toll).
- Take the first exit off of the Newport Bridge toward Scenic Newport.
- Turn right off the exit ramp and drive straight through the first set of traffic lights.
- At the second set of lights, turn right (America's Cup Avenue) and you will arrive in downtown Newport.

* You should be sure to request further directions from your chosen hotel to get directly to their exact location.

...continued



DIRECTIONS TO THE CEREMONY AT CHRIST THE KING CHURCH

Christ the King Church

180 Old North Road, Kingston, Rhode Island 02881*

*Note that our invitation quotes North Road. If you are going to Mapquest directions, be sure to use 180 Old North Road as the destination.

Christ the King Church is located adjacent to the Kingston campus of the University of Rhode Island, about 20 miles from Newport, on the mainland. It is 30 miles south of Providence, 75 miles from Boston, and 160 miles from New York City. Route 138, which connects with Interstate Route 95 ten miles west of the church, passes through Kingston.

If you are staying in Newport, you should make sure to leave your hotel by 2:00pm in order to make sure to get to the church on time. It should only take about 30 minutes to reach the church location; however, it's best to plan for summer traffic and leave early.

If you get lost, you can follow the signs for URI.

To the Church ... from Newport

- Follow Route 138 West over the Newport Bridge and then over the Jamestown bridge.
There will be two exits at the end of this section of Route 138 West after you get off the Jamestown bridge. (138 West will pick up again shortly)
- Take the second (last) exit for Route 1 South, towards Westerly/New York.
- Follow Route 1 South to the intersection where Route 138 West begins again.
There will be a historic wooden lookout tower on your left-hand side and a gas station ahead of you on your right.
- Take a right onto Route 138 West. After the first stop light, take a right onto Old North Road. There is a bookshop on your left directly across from the intersection.
- Follow Old North Road to Christ the King Church, which will be on your left.

To the Church ... from points North (Providence, Boston)

- Take Interstate 95 South to Exit 9 (for Route 4 South).
- Follow Route 4 South until it becomes Route 1 South.
- Stay on Route 1 South until you reach the intersection of Route 138 West (do not take the exit for Newport / Jamestown).
- Take a right onto Route 138 West. After the first stop light, take a right onto Old North Road. There is a bookshop on your left directly across from the intersection.
- Follow Old North Road to Christ the King Church, which will be on your left.

To the Church ... from points South (Connecticut / New York)

- Take Interstate 95 North to Exit 3A (Route 138 East).
- Continue on Route 138 East. After the traffic lights at the Upper College Road entrance to the University of Rhode Island, take a left onto Old North Road. There is a bookshop on your left directly across from the intersection.
- Follow Old North Road to Christ the King Church, which will be on your left.

...continued



DIRECTIONS TO THE RECEPTION AT OCEANCLIFF

Our reception will follow the church ceremony with cocktails at 6:30pm, dinner and dancing at 7:30pm. There will be a couple of hours of time in between ceremony and reception. Please feel free to freshen up back at your hotel or visit a few sites in Newport during this time...but don't get lost!

OceanCliff

65 Ridge Road, Newport, Rhode Island 02840
Phone: 401.848.0795

If you've driven to the church from Newport and plan to trace your steps backwards, you'll need to note that Old North Road does not lead back to Route 138, as part of it is a one-way street going toward the church. So be sure to follow the directions below for the short detour back to Route 138 East. Mapquest has good directions, which begin at step five in the directions below.

To OceanCliff ... From Christ the King Church

- Go out the front driveway of the church.
- Take a right on Old North Road.
- Take a right on Briar Lane. Go about .2 mi.
- Turn left on Upper College Road. Go about .2 mi.
- Turn left on Kingston Road / Route 138 East and go about 3.8 mi.
- Turn left at Tower Hill Road / Route 138 North. Go about 2.3 mi.
- Take the exit for the continuation of Route 138 East (Bridges/Jamestown/Newport exit).
- Continue on Route 138 East across the Jamestown Bridge and then across the Newport Bridge (\$2.00 toll).
- Take the first exit off of the Newport Bridge toward Scenic Newport.
- Turn right off the exit ramp and drive straight through first set of traffic lights.
- At second set of lights, turn right (America's Cup Avenue), pass the dining train on your right and head into downtown Newport. Go about 0.7 miles.
- At the fork in the road, take a right at the 7th light onto Thames Street. Go .5 miles.
- Turn right onto Wellington Avenue. (Shell Gas Station on the left) Go about .6 miles.
- Wellington Avenue becomes Halidon Avenue. Go about 0.2 more miles.
- Turn right onto Harrison Avenue. Go 1.3 miles.
- Just after Fort Adams State Park, veer right onto Ridge Road. Go 0.4 miles.
- OceanCliff will be on your right-hand side.

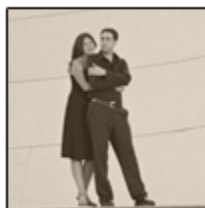
Think you've gotten wicked lost? New Englanders are famous for giving directions that will only get you more lost than you were when you started. If you can't find your way, call the Cerbos. (They promise not to give directions using landmarks that don't exist anymore.)

Vincent Cerbo cell: 401.578.0376

Common New England directions might sound something like this...

"From Quincy to the Jordan Marsh in Bedford, alright, well there are several ways to get there, let's see, well the old Route 14 used to go straight there - you just follow the Merrimack River. But that was before the war, so now... you'll see this wicked huge Radio Shack. That's where ya get off, and... you're right there pal."

Saturday Night Live "What's the Best Way?" 12-Dec-1992



MAP OF ROUTE FROM NEWPORT TO CHRIST THE KING CHURCH

"Things are looking up, Holmes. This little island's still on the map."
-Dr. Watson, "Sherlock Holmes and the Secret Weapon (1943)"

